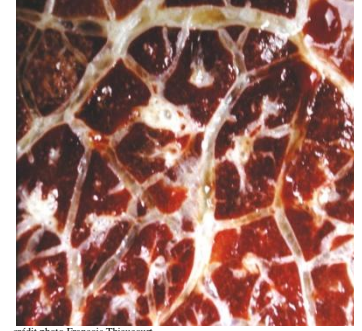




crédit photo François Thiaucourt

« Diagnostic techniques for CBPP »¹

16 to 22 November 2011
1 week



crédit photo François Thiaucourt

Scientific expert:
François Thiaucourt

Introduction to the problem

Contagious bovine pleuropneumonia (CBPP) belongs to the OIE (World Organisation for Animal Health) list for diseases having a very important impact on cattle herds or representing a major threat to international livestock trade. It is caused by a mycoplasma, *Mycoplasma mycoides* subsp. *mycoides* SC (MmmSC).

This disease is characterized by respiratory symptoms and lesions of pneumonia and pleurisy. Those lesions can evolve towards a chronic stage, and the animals bearing such lesions, although not detected during clinical examination constitute a possible infection source for susceptible livestock.

Until recently, fight against CBPP consisted in massive immunization campaigns, often combined with rinderpest vaccines. Those campaigns are costly as they need to be repeated every year. As a consequence, immunization effort in Africa has waned and the number of foci has increased.

Laboratory diagnosis is essential, not only to confirm suspicions of CBPP, but also to measure the disease impact on the livestock and thus implement adapted control strategies. This laboratory diagnosis is not technically difficult but it requires a practical experience.

Pedagogic objectives

At the end of this training, participants must be able to:

- undertake CBPP serological analyses according to one of the two reference techniques of OIE (complement-fixation reaction , and cELISA) and interpret the results ;
- isolate and identify the CBPP agent using classical techniques (biochemical tests, growth inhibition) and analyze the problems encountered in the field ;
- titrate a CBPP vaccine;
- describe the principles of the PCR and real-time PCR technique applied to CBPP for a quick diagnosis.

«Cirad is a reference centre for OIE for diagnosis and control of animal diseases in tropical regions. Organizing training sessions in this field is part of the mandate»

¹ This training may be transferred to an African location

Programme

The program is a succession of theoretical courses and laboratory practicals allowing the participants to become familiar with bacteriological and serological techniques.

Theoretical courses	15 hours
Laboratory practicals	15 hours

Total	30 hours

Conditions

This course is open to anybody involved in CBPP diagnosis (veterinarians, laboratory technicians).

Participants' number is strictly limited to 10.

The training is originally delivered in French, but, upon request, English language sessions and/or delocalized sessions in partner institutions may be organized, as long as a minimum number of participants is achieved.

Training costs

Pedagogic	: 1 200 €
Travel towards Montpellier	: to be determined by participant
Housing expenses (about)	: allow a minimum of 80 € a day

If necessary, a customized estimate can be established upon request.

Note :

CIRAD does not deliver fellowships or travel grants. It is your responsibility to fill a request as soon as possible to:

- national authorities dealing with livestock and/or grants ;
- Cooperation and Culture Services of French embassies and consulates ;
- other foreign countries embassies ;
- international organisms (FAO, UNPD, European Union, IAEA, IDB, ...) ;
- development projects or non governmental organizations.

Application procedure

Applications, consisting of a detailed resume, a motivation letter and details about the organization managing your grant, must be sent as much as possible before **October 15, 2011**, to the course secretary at the following address:

CIRAD Enseignement en Elevage et Médecine Vétérinaire Tropicale
TA A-15/B
Campus international de Baillarguet
34398 MONTPELLIER Cedex 5
France

Tel : 33 (0) 4.67.59.39.02
Fax : 33 (0) 4.67.59.37.97
E-mail : marie-caroline.estienne@cirad.fr

Enseignement en Elevage et Médecine Vétérinaire Tropicale
http://www.cirad.fr/ur/formation_elevage_en